



GPS – Global Procurement System

Technical requirements

This document belongs to Eni S.p.A. and his rights are *civilly* and *penally* reserved.



Technical requirements

Before accessing the GPS system you need to check that your Internet connection is suitable. We recommend that your working station satisfies the technical requirements listed below.

Hardware requirements

- CPU: Pentium or higher.

Internet connection requirements

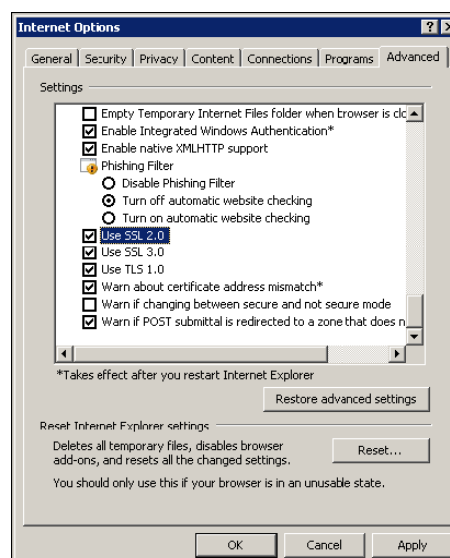
- Internet Service Provider for accessing via browser. We advise you to have a high speed connection (ADSL) ≥ 1 Mbit

System Limitations

- File size limit: 100 MByte for each document
- System Time Out: 15 minutes
- Upload system Time Out: 2 minutes

Browser requirements

- In order to access Eni you need:
 - **Microsoft Internet Explorer from version 6.x to 9.x**
 - or
 - **Mozilla Firefox from version 3.5 to 6.0**You can check your Internet Explorer version by selecting "?"/"Information on Internet Explorer".
- **SSL** (Secure Socket Layer, protocol for secure transaction) suitability is required. You can check whether you satisfy this requirement by selecting "Tools" -> "Options" -> "Advanced" from the Internet Explorer menu. The options "Use SSL 2.0" and "Use SSL 3.0" should be flagged.





This document belongs to Eni S.p.A. and his rights are *civilly* and *penally* reserved.



- Cookies enabling is required: To find information about the cookies activation procedures, please refer to your browser support site
- Saving encrypted pages to disk must be allowed.
- Resolution: the optimal resolution for the web site is 1024x768 pixel.

Software requirements

- An active **e-mail address** is required so that you can receive e-mail notifications when a document is delivered.
- **Acrobat Reader** (at least 8.0) is needed for opening *.pdf* files containing document notifications that might be received by mail.
Acrobat Reader is available free of charge at the following address:
<http://www.adobe.it/products/acrobat/readstep.html>
- **Microsoft Office** is recommended. Free copies of the Microsoft Office viewers can be downloaded from www.microsoft.com
- In order to use all the Service functionalities you need to install the **JRE Java Runtime Environment** applet:
 - Minimum release: 1.5.XX
 - The file can be downloaded on the SUN web site at the following address:
www.java.com/it

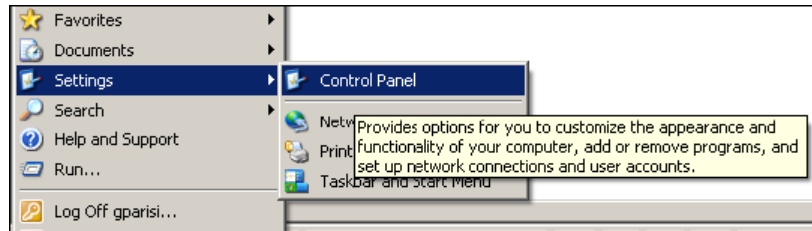
APPENDIX - Setting up Java JAVA CONFIGURATION

The following pop-up could appear during browsing:

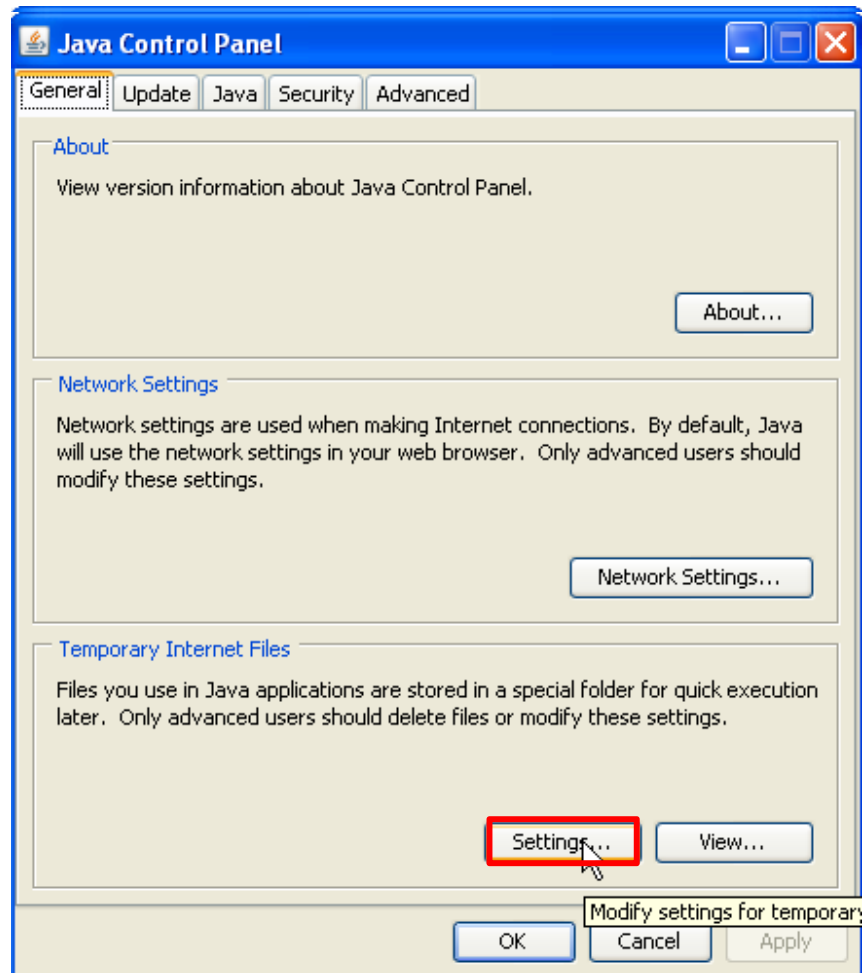


In order to allow the proper functioning of the application the user will tick "*Always trust content from the publisher*" and select "**Run**".
If you select "**Cancel**" follow the steps below.

Open java from the Windows Control Panel:
select "**Settings**" from the "**Temporary Internet files**"(view procedure listed below):

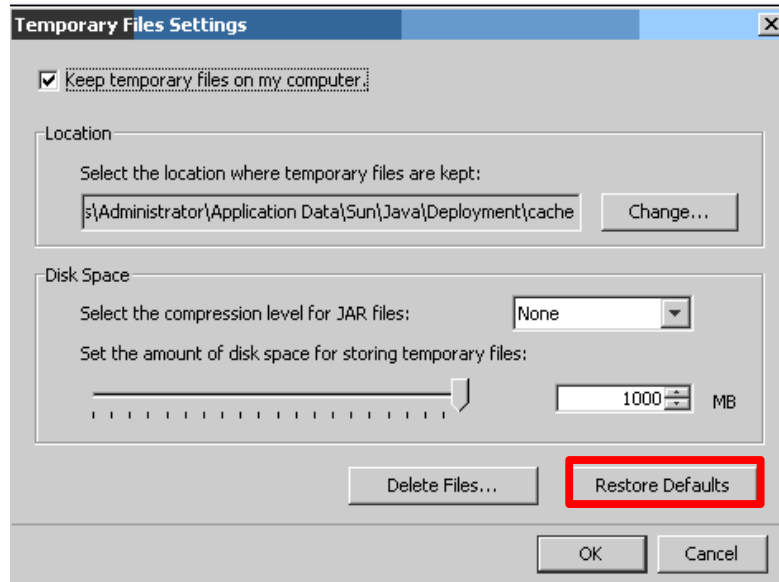


Date and Time	Set the date, time, and time zone for your computer.
Display	Change the appearance of your desktop, such as the background, screen saver, colors, font sizes, and screen resolution.
Folder Options	Customize the display of files and folders, change file associations, and make network files available offline.
Fonts	Add, change, and manage fonts on your computer.
Game Controllers	Add, remove, and configure game controller hardware such as joysticks and gamepads.
Internet Options	Configure your Internet display and connection settings.
Java	Java(TM) Control Panel
Keyboard	Customize your keyboard settings, such as the cursor blink rate and the character repeat rate.
Mail	Microsoft Office Outlook Profiles
Mouse	Customize your mouse settings, such as the mouse button configuration, double-click speed, mouse pointers, and motion speed.
Network Connections	Configure network connections, such as Ethernet, Wi-Fi, and Bluetooth.
Nokia Connection Manager	Configure which connection types are active for PC Suite_
Phone and Modem Options	Configure your telephone dialing rules and modem settings.

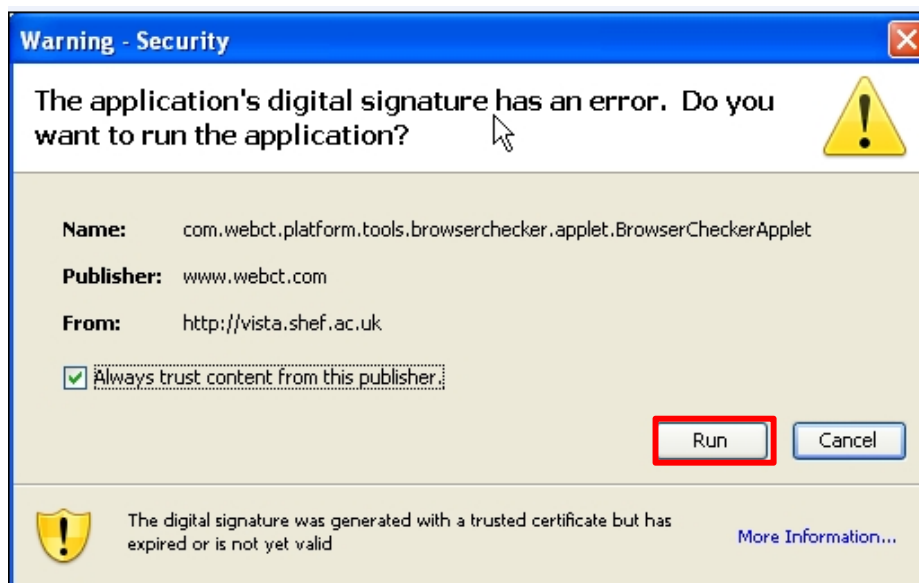




Select "Restore Default" (as illustrated below):



Repeat the login to SRM and replay the steps required in order to insert attachments. You will be prompted again to accept the java applet to SAP. Afterwards select "**Run.**"



This document belongs to Eni S.p.A. and his rights are *civilly* and *penally* reserved.